

Red-i™ BASIC Stamp Web Server Quick Start Guide



Step 1: Connect the Red-i BASIC Stamp Web Server to your Board of Education, and connect a serial cable from the Red-i to your computer's COM port.

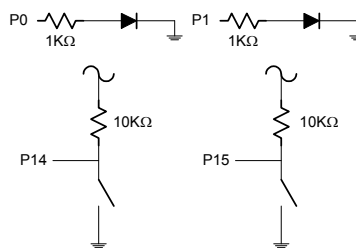
Step 2: Install and run the included Red-i Control Center software and follow the instructions on the screen. If the CD does not AutoRun, run Setup.exe in the root directory of the install CD.

Step 3: Under the "Communications" menu select the proper COM port for your computer and press "Connect" to initiate communication with the Red-i Web Server. Enter an IP address obtained from your network administrator into the "IP Address" input area (ex. 192.168.2.12) and press "Send" to update the IP address on the Red-i. Make sure the IP address selected can be viewed from your local network.

Step 4: Under the "AppMOD Communications" menu, select a serial baud rate of 9600, and a variable update window of 2 seconds.

Step 5: Now under the "Files" menu, click on the "Add" box to select web files to download to the Red-i. Select the files named "index.htm", "on.gif", and "off.gif" in the directory "demos\leds\" on your installation CD. After these files appear in the Files list box, press "Send" to download them to the Red-i.

Step 6: Now design the simple circuit diagram shown below on your Board of Education and program your BASIC Stamp with the file "demo.bs2" in the directory "demos\leds\" on your installation CD.



Step 7: Connect the Red-i to your network with a Cat5 Ethernet cable, hit the Reset button on your Board of Education and your Parallax BASIC Stamp is now interfacing to the web! Each time a switch is pressed on the Board of Education, its associated LED will toggle on or off. Reload the web page to see the LED change there as well. You may also change the state of the LEDs by clicking on the radio buttons on the web page and then clicking "Send".

For troubleshooting and detailed operating instructions, a full Red-i BASIC Stamp Web Server manual has been included in the installation. The manual may be viewed from the Windows "Start Menu." For additional help, contact Parallax tech support at 916-624-8333 or support@parallax.com